



Registration process of myPAT

## Step 1: Visit **mypat.in** & click on **register**

Call us at +91 9599295808, +91 9599295807 MY-PAT for any queries or assistance (10AM - 6PM during weekdays)

myPAT

Exams Methodology FAQs

Register Login

Assess. Analyze. Achieve

Excel the competition with our personalized learning solution

Join Us Now  
It is FREE to try

Click on Register or Join Us now

Your Learning Partner for  
BITSAT, KVPY, NTSE, JEEA AND JEEM, FOR CLASSES VI - XII+

Content Partner  
**FIITJEE**

The image is a screenshot of the myPAT website homepage. The background is a teal gradient with various educational icons like a globe, clock, bar chart, and lightbulb. At the top, there is a black navigation bar with contact information and links for Register and Login. Below this, the myPAT logo is on the left, and links for Exams, Methodology, and FAQs are on the right. The main content area features the headline 'Assess. Analyze. Achieve' and a sub-headline 'Excel the competition with our personalized learning solution'. A large orange button with the text 'Join Us Now' and 'It is FREE to try' is centered. A white line with an arrow points from a text box 'Click on Register or Join Us now' to the 'Join Us Now' button. At the bottom left, it says 'Your Learning Partner for BITSAT, KVPY, NTSE, JEEA AND JEEM, FOR CLASSES VI - XII+'. At the bottom right, it says 'Content Partner' above the FIITJEE logo.

## Step 2: Select how you want to register

Call us at +91 9599295808, +91 9599295807 myPAT for any queries or assistance (10AM - 6PM during weekdays)

myPAT

Register Login

Exams Methodology FAQs

Register

f Continue with Facebook

g+ Continue with Google

✉ Continue with your email

Select Account to Register

Your Learning Partner for  
BITSAT, KVPY, NTSE, JEEA AND JEEM, FOR CLASSES VI - XII+

Content Partner  
**FIITJEE**

## Step 3: enter your e-mail id & desired password.

Call us at +91 9599295808, +91 9599295807 myPAT for any queries or assistance (10AM - 6PM during weekdays) [Register](#) [Login](#)

**myPAT**  
The Personalized Approach to Learning


[Exams](#) [Methodology](#) [FAQs](#)

First time here? Sign up now!

Email address (This will be your username)

Password (Should be at least 6 characters long)

Confirm your password

☐ I'm not a robot 

[Privacy](#) [Terms](#)

Continue

Fill in the required details:  
Email & desired password,  
verify the captcha and click  
on continue

Your Learning Partner for  
BITSAT, KVPY, NTSE, JEEA AND JEEM, FOR CLASSES VI - XII+

Content Partner  
**FIITJEE**

# Step 4: Enter your mobile number to receive OTP.

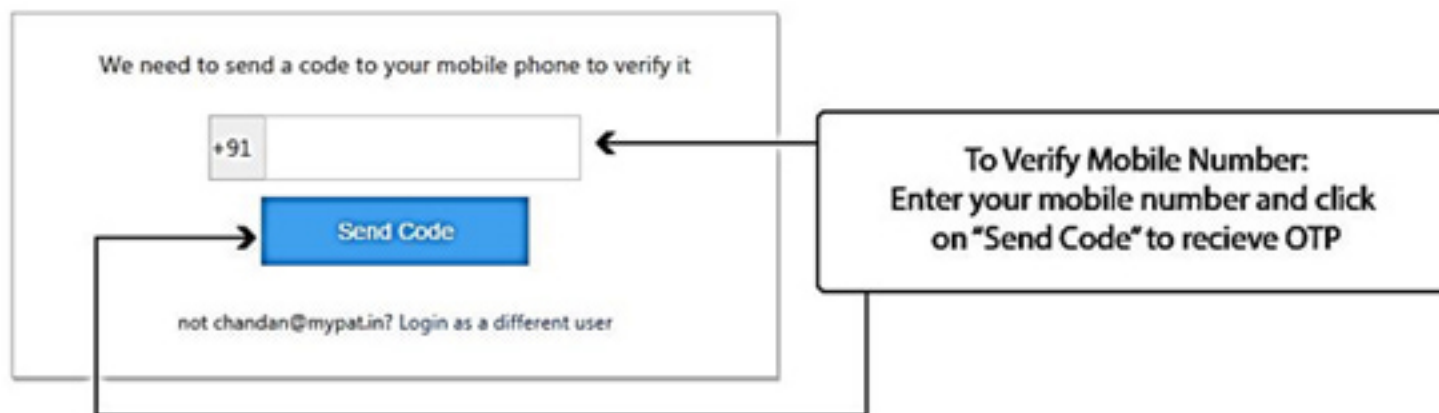


Logout

## Almost there

Just need some more information in order to give you a better experience

- 1 Verify your mobile number    2 Add basic info    3 Set your academic targets



# Step 5: Enter the OTP you received.



Logout

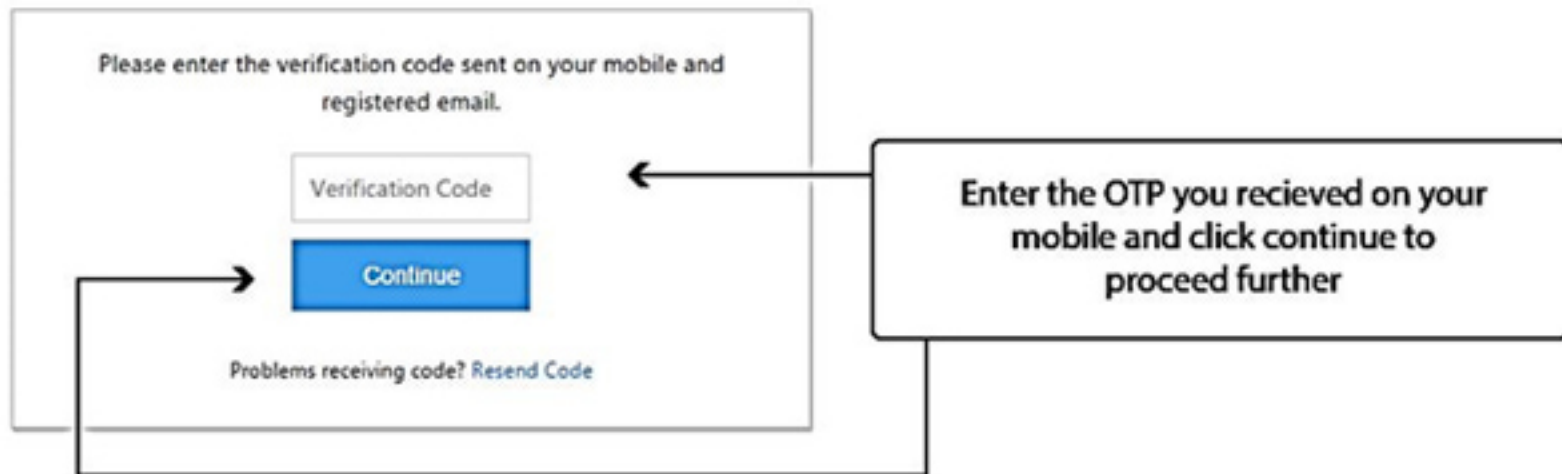
## Almost there

Just need some more information in order to give you a better experience

1 Verify your mobile number

2 Add basic info

3 Set your academic targets



# Step 6: Enter your name and class

[Logout](#)

## Almost there

Just need some more information in order to give you a better experience

1 Verify your mobile number

2 Add basic info

3 Set your academic targets

Please enter the details.

FIRST NAME	LAST NAME
<input type="text" value="First Name"/>	<input type="text" value="Last Name"/>

Currently studying in

We need to know your current class to provide you with better recommendations. Please make sure that your selection is correct.

[Continue](#)

Fill the FName, LName and Class you are studying in and click on "Continue" to proceed to next step.



# Step 7: Select your target exam



[Logout](#)

## Almost there

Just need some more information in order to give you a better experience

- 1 Verify your mobile number
- 2 Add basic info
- 3 **Set your academic targets**

Please select your academic targets

JEE (MAIN) - 2018

Let me in!

Select your academic target and click on "Let me in!" to be a part of myPAT family.



# Registration is complete!

Now on Dashboard, Simply add your enrolment no in your profile

The screenshot displays the myPAT dashboard interface. On the left is a blue sidebar with navigation links: Home, Products, Target, and Help. The main content area is titled "My Dashboard" and is divided into several sections. The "Targets" section contains four boxes for Pre-RMO 2016, KVPY -2018, BITSAT-2018, and JEE(ADVANCED)-2018. The "Latest News and Updates" section lists three news items with right-pointing arrows. The "Getting Started" section has three links: Verify mobile-phone, Verify-Mail, and Complete-your-profile, each with a right-pointing arrow. The "My Products" section lists two product bundles with "View Schedule" links. In the top right corner, a user profile dropdown menu is open, showing options: Profile, Transaction History, Change Password, and Logout. The "Profile" option is highlighted with a red rectangle. The URL "mypat.in/UserViews/userprofile.aspx" is visible at the bottom left.

myPAT

Home

Products

Target

Help

My Dashboard

Targets

Pre-RMO 2016

KVPY -2018

BITSAT-2018

JEE(ADVANCED)-2018

Latest News and Updates

Pre-RMO 2016 PRE-RMO Sample Test 2 is AVAILABLE now

KVPY -2017 Part Test -2 (PT2) For XII has been AVAILABLE and not attempted by you

KVPY -2018 Part Test -1 (PT1) For XI has been AVAILABLE and not attempted by you

Getting Started

Verify mobile-phone

Verify-Mail

Complete-your-profile

My Products

COMBO- JEEM + JEEA + BITSAT + KVPY XII - 2016 ( COMB-02 )

COMBO- JEEM + JEEA + BITSAT + KVPY XII - 2017 ( COMB-02 )

View Schedule

View Schedule

Hi myPAT

Profile


Transaction History

Change Password


Logout

<mypat.in/UserViews/userprofile.aspx>

# Add enrollment number and web access code in Partnership institute under profile section.



Hi myPAT



**myPAT123 INDIA**  
Getting better at BITSAT, JEE (MAIN), JEE(ADVANCED), KVPY, Pre-RMO

Basic Info

Products

Social Accounts

Target Exams


**Partner Institutes**

Communication Details

## Partner Institutes

Edit

If you are an existing student of our partner institutes then please fill in the details below.



## Communication Details

Edit

Parent's/ Guardian's Name	Student Address
enter123	enter123@123
Parent's/ Guardian's Email	Alternative Email
edgdfg@345345.com	edgdfg@egrt.com
Parent's/ Guardian's Phone	Alternative Phone
1231233123	1233123
Parent's/ Guardian's Address	

Chat with us